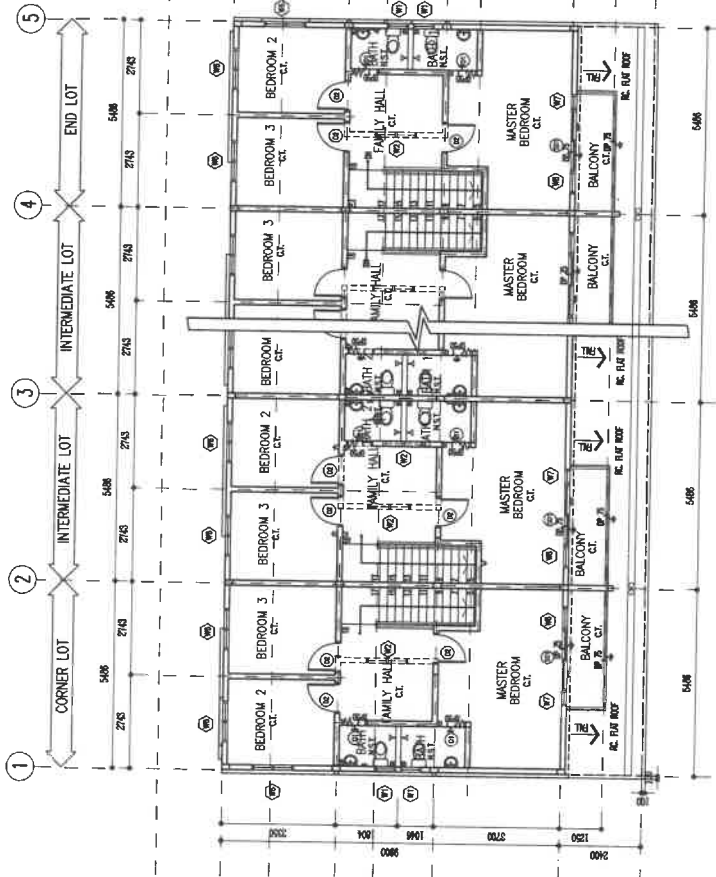


GROUND FLOOR PLAN
(RUMAH TERES 2 TINGKAT JENIS B - 18' X 65')

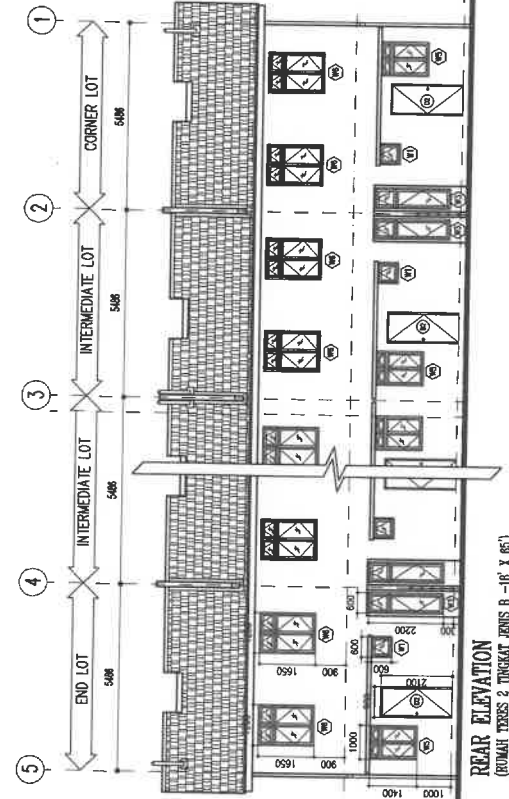


PEMILIK :	TETUAN SCIENTEX HEIGHTS SDN BHD
TAJUK PROJEK :	PERMOHONAN PELAN BANGUNAN DIBAWAH AKTA 133, BAGI CADANGAN PEMBANGUNAN BERCAMPUR DI ATAS LOT 27069 (HAKMILIK TANAH GRN 61299), MUKIM AYER PANAS, DAERAH JASIN, MELAKA. UNTUK TETUAN SCIENTEX HEIGHTS SDN. BHD.
NO. LUKISAN :	AP/FSH/11/22-8-DW1

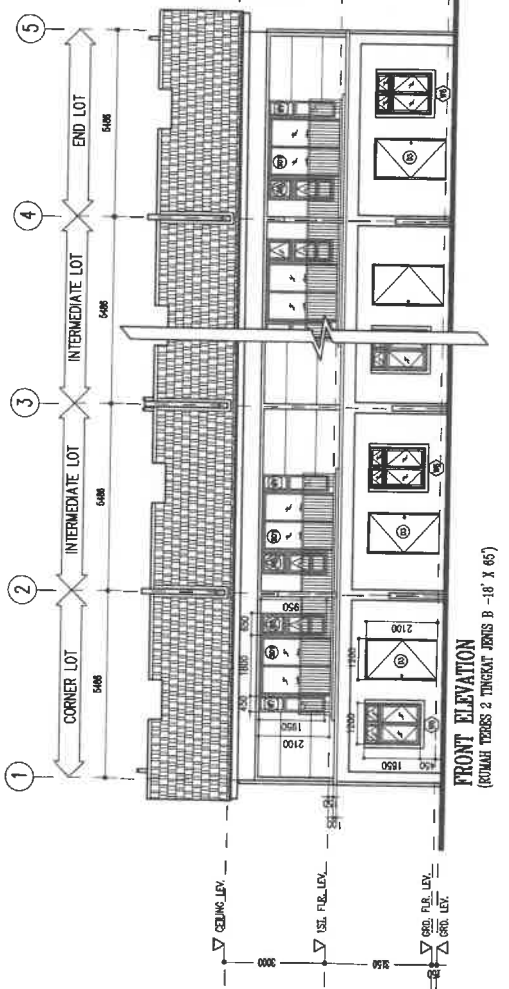
TAJUK LUKISAN :	SCHEDULE OF DOOR & WINDOW (FLOOR PLAN - INDICATION)
PINDAAN :	T.T
MOD / TARIKH	PERVARA
SKALA :	1 : 125
DILUKIS OLEH :	MURIL
TARIKH :	NOV 2022
DISEMAK OLEH :	
Perunding Arkitek :	

NOTA: All measurements, specifications, designs and details shown in this plan are for information only and shall be subject to such variations, amendments and conditions as may be required by the relevant authorities on site during the period of construction.

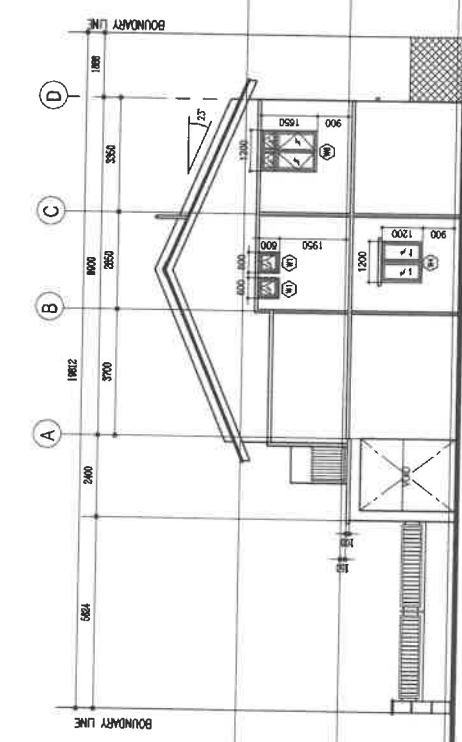
ARKITEK PEMBANGUNAN
P. JALAN COLOMBO NO. 2301/10688 M. 106-103300 TEL: 2923029



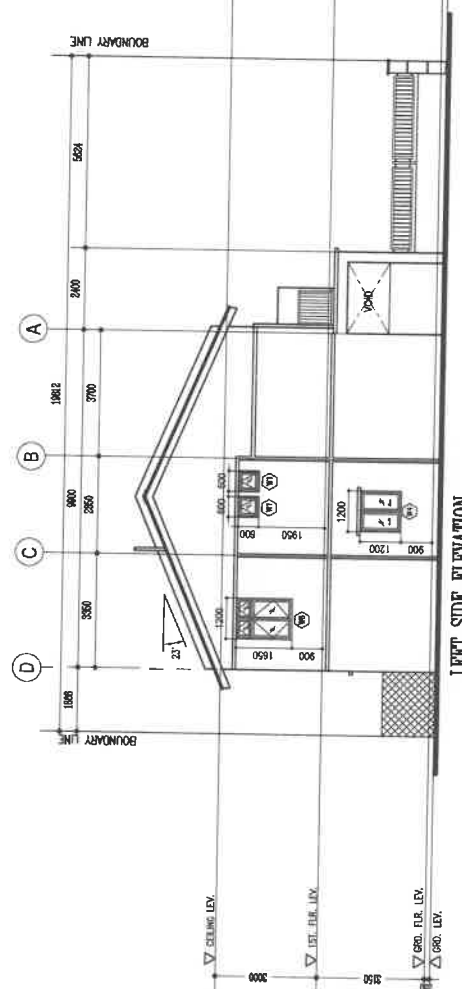
FRONT ELEVATION
(RUMAH TERES 2 TINGKAT JENIS B - 18' X 65')



REAR ELEVATION
(RUMAH TERES 2 TINGKAT JENIS B - 18' X 65')



LEFT SIDE ELEVATION
(RUMAH TERES 2 TINGKAT JENIS B - 18' X 65')



RIGHT SIDE ELEVATION
(RUMAH TERES 2 TINGKAT JENIS B - 18' X 65')

PEMILIK :
TETUAN SCIENTEX HEIGHTS SDN BHD

TAJUK PROJEK :
PERMORHAN PELAN BANGUNAN DIBAWAH AKTA 133, BAGI CADANGAN PEMBANGUNAN BERCAKUP DI ATAS LOT 27069 (HAK MILIK TANAH GRN 61299), MUKIM AYER PANAS, DAERAH JASIN, MELAKA, UNTUK TETUAN SCIENTEX HEIGHTS SDN. BHD.

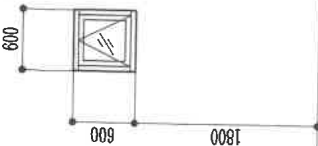
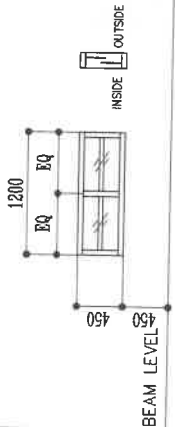
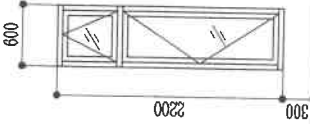
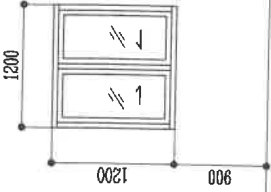
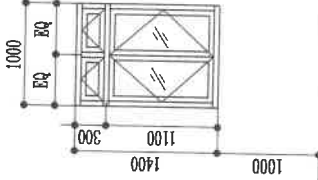
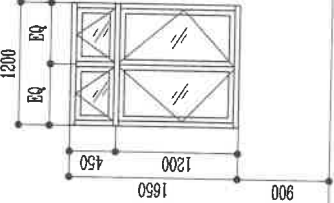
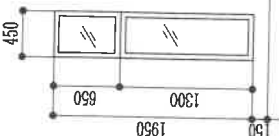
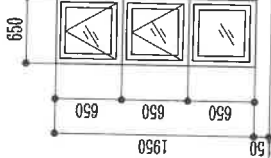
TAJUK LUKISAN :
SCHEDULE OF DOOR & WINDOW (ELEVATION - INDICATION)

PINDAAN :
KOD TARIKH PERKARA T/T

SKALA :	1 : 125
DILUKIS OLEH :	MURIL
TARIKH :	NOV 2022
DISEMAK OLEH :	
Perunding Arkitek :	



NO. LUKISAN : AP/F/SH/1/22-B-DW2

FLOOR LEVEL				
TYPE	(W1)	(W2)	(W3)	(W4)
SIZE	600mm(w) x 600mm(h)	1200mm(w) x 450mm(h)	600mm(w) x 2200mm(h)	
DESCRIPTION	ALUM. FRAME, TOP HUNG WINDOW TO MFGR'S DETAILS	ALUM. FRAME, 5MM THK. FIXED GLASS LOUVERS WINDOW TO MFGR'S DETAILS	ALUM. FRAME, CASEMENT WINDOW WITH TOP HUNG ABOVE TO MFGR'S DETAILS	ALUM. FRAME, SLIDING WINDOW TO MFGR'S DETAILS
LOCATION & QUANTITY	BATH 1, BATH 2, BATH 3	BATH 1, BATH 2, FAMILY HALL	BEDROOM 4	DINING
	CORNER 3	CORNER 1	CORNER 1	CORNER 1
	INTER 1	INTER 2	INTER 1	INTER -
	END 3	END 1	END 1	END 1
FLOOR LEVEL				
TYPE	(W5)	(W6)	(W7)	(W8)
SIZE	1000mm(w) x 1400mm(h)	1200mm(w) x 1650mm(h)	450mm(w) x 1950mm(h)	650mm(w) x 1950mm(h)
DESCRIPTION	ALUM. FRAME, CASEMENT WINDOW WITH TOP HUNG ABOVE TO MFGR'S DETAILS	ALUM. FRAME, CASEMENT WINDOW WITH TOP HUNG ABOVE TO MFGR'S DETAILS	ALUM. FRAME, FIXED GLASS WINDOW TO MFGR'S DETAILS	ALUM. FRAME, TOP HUNG WINDOW WITH FIXED GLASS TO MFGR'S DETAILS
LOCATION & QUANTITY	KITCHEN	BEDROOM 2, BEDROOM 3	MASTER BEDROOM	MASTER BEDROOM
	CORNER 1	CORNER 4	CORNER 1	CORNER 1
	INTER 1	INTER 3	INTER 1	INTER 1
	END 1	END 4	END 1	END 1
PEMILIK :	TAJUK PROJEK :			
TETUAN SCIENEX HEIGHTS SDN BHD	TAJUK LUKISAN :			
	SCHEDULE OF WINDOW			
	PERMOHONAN PELAN BANGUNAN DIBAWAH AKTA 133, BAGI CADANGAN PEMBANGUNAN BERCAMPUR DI ATAS LOT 27069 (HAKMILIK TANAH GRN 61299), MUKIM AYER PANAS, DAERAH JASIN, MELAKA, UNTUK TETUAN SCIENEX HEIGHTS SDN. BHD.			
	RUMAH TERES 2 TINGKAT - JENIS B (18' X 65')			
	NO. LUKISAN : AP /F/SH/11/22-B-W1			
	SKALA : 1 : 50 DILUKIS OLEH : NURUL TARIKH : NOV 2022 DISEMAK OLEH : Perunding Arkitek :			
	KOD TARIKH : PERKARA : T.T : T.I : T.S : T.M : T.N : T.O : T.P : T.Q : T.R : T.S : T.T : T.U : T.V : T.W : T.X : T.Y : T.Z :			
	*NOTA: All measurements, specifications, designs and details shown in this plan are only approximate and shall be subject to such variations, amendments and omissions as may be necessary and / or determined by architect / engineer concerned like, columns, and readability of final made from time during the process of construction.			
	